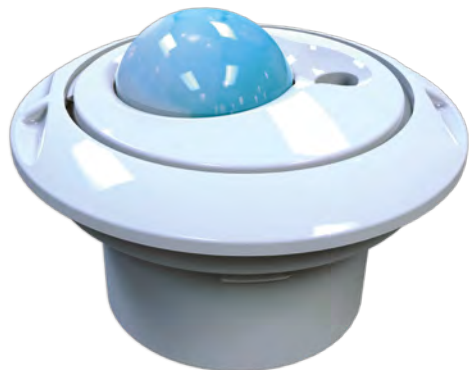


LOG-HPML

IN FIXTURE WIRED MOTION SENSOR



Overview

LOG-HPML provides flexibility when it comes to incorporating the sensor into their fixture. It includes a digital LUX sensor and a PIR occupancy sensor. The two piece scenario allows for flexibility when installing into fixtures where there isn't significant room for an all-in-one option. This sensor is rated for up to 11 meters.

Technical Specifications

Motion Sensing	Digital Passive IR
Detection Distance	12 m
Detection Range (Horizontal x Vertical)	102° x 92°
Ambient Light Sensing	0-94.8 FC (0-1020 LUX); PHOTO IC TYPE
Operating Temperature	0° - 60°C - Indoor use only
Operating Power	< 1mA
Standby Power	< 1W
Enclosure	ABS Plastic
Wireless Range	45.72 m (15.24 m - 45.72 m)
Wireless Protocol	902 MHz
Start Up & Configuration	LOG-USB (476100295) & LOGICACONFIG

Application Notes

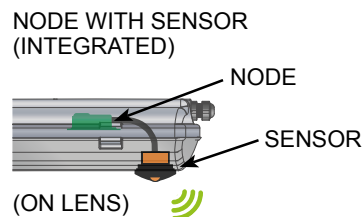
BASIC	
· Zoning	· Luminaire level lighting control
· Addressable	· Easy start-up & configuration
· Scene control	

ADVANCED	
· Networking	· Device monitoring / Remote diagnostic
· Scheduling	· Personal control
· BACnet	· Energy monitoring
	· Restricted access

Compatible Devices



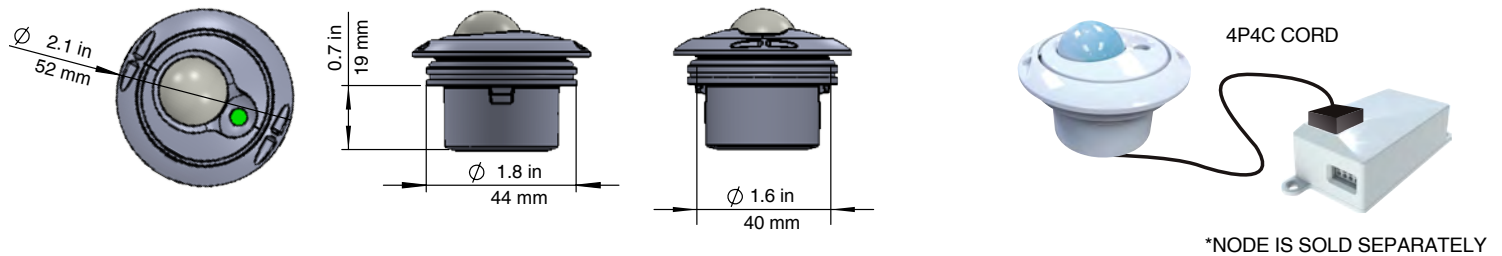
Basic Common Application



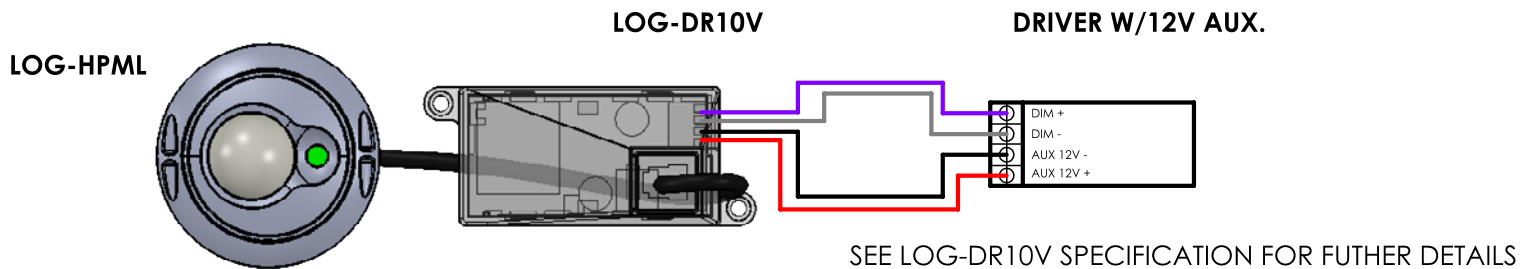
Environmental Concerns:

- Humidity degree: 15 to 85% Rh (Avoid condensation or freezing of this product).
- Pressure: 86 to 106 KPa.
- Overheating, oscillations, shocks can cause the sensor to malfunction.
- This sensor is not waterproof or dust-proof. Avoid use in environments subject to excessive moisture, condensation, frost, containing salt air or dust.
- Avoid use in environments with corrosive gases.

Dimensions



Wiring Diagram



Detection Performance

